



3 Crowther Avenue, Salford, M5 3JU

This two bedroom mid mews house has plenty of accommodation and offers ideal scope for the first time buyer or buy to let investor. Entrance hall with storage cupboard, spacious lounge, fitted kitchen and dining room. On the first floor there are two double bedrooms, separate w.c and bathroom with separate shower cubicle. Upvc double glazing and gas central heating. Parking for 2 cars to the rear. Small frontage and rear garden. No Chain. FREEHOLD.

Price £212,000

Viewing arrangements

Viewing strictly by appointment through the agent

245 Deansgate, Manchester, M3 4EN 0161 833 9499 opt 3

Entrance Hall

Staircase to the first floor with understair recess. Radiator, laminate flooring, Deep storage cupboard.

Lounge

10'8" x 12'6"

Upvc double glazed window, two wall light points, radiator. Fire surround with electric fire.

Kitchen

10'8" x 8'4"

Upvc double glazed window. Wall and base units with one and a half bowl sink unit, gas hob and electric oven. Open to-

Dining Room

10'6" x 8'4"

Upvc double glazed window and door to the rear garden. Laminate flooring, door to the lounge

First Floor

Two cupboards, one housing the gas central heating boiler.

Bedroom One

15'5" x 10'9"

Upvc double glazed window. Radiator

Bedroom Two

12'6" x 8'7"

Upvc double glazed window. Radiator

Bathroom

8'2" x 5'1"

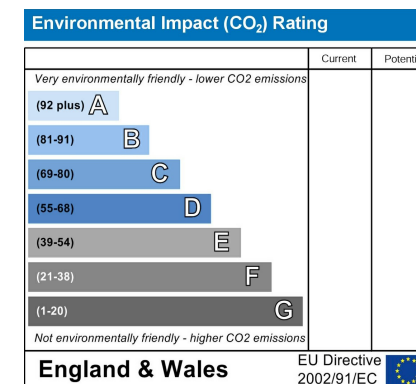
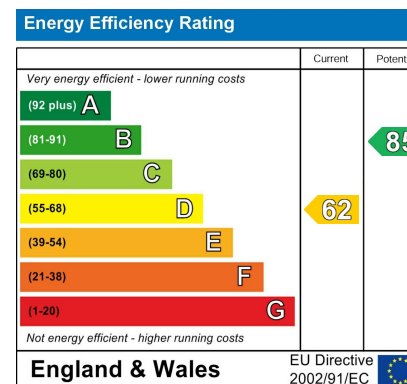
Upvc double glazed window. Radiator. Bath, wash hand basin and separate walk in shower cubicle.

Externally

Small frontage, garden to the rear with shed and off road parking for 2 cars. This is accessed from Grain View, off Goodiers Drive

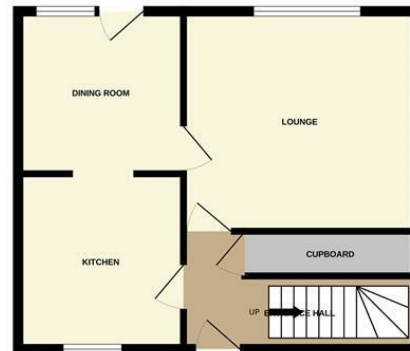
Agents Notes

To be able to purchase a property in the United Kingdom all agents have a legal requirement to conduct Identity checks on all customers involved in the transaction to fulfil their obligations under Anti Money Laundering regulations. We outsource this check to a third party and a charge will apply. Ask the branch for further details.





GROUND FLOOR



1ST FLOOR



Measurements are approximate. Not to scale. Illustrative purposes only.
Made with Metropix ©2025



These particulars are believed to be accurate but they are not guaranteed and do not form a contract. Neither Jordan Fishwick nor the vendor or lessor accept any responsibility in respect of these particulars, which are not intended to be statements or representations of fact and any intending purchaser or lessee must satisfy himself by inspection or otherwise as to the correctness of each of the statements contained in these particulars. Any floorplans on this brochure are for illustrative purposes only and are not necessarily to scale.

Offices at: Chorlton, Didsbury, Disley, Hale, Glossop, Macclesfield, Manchester Deansgate, Manchester Whitworth Street, New Mills, Sale, Wilmslow and Withington

245 Deansgate, Manchester, M3 4EN

0161 833 9499 opt 3

manchester@jordanfishwick.co.uk

www.jordanfishwick.co.uk

